

ELMARK[®]

The Brand of Electricity

XL EMERGENCY LIGHT



TECHNICAL SPECIFICATION

INDOOR-EMERGENCY LIGHTS

ELMARK[®]

The Brand of Electricity

Technical data:

- Rated voltage: 230V/ 50-60Hz
- Power: 3W;
- LED type: 7 super bright SMD LED
- Charge time: 8-12h
- Discharge time: 3h
- Battery: 3,6V/300mAh
- Conversation time: < 0.2s
- Frame: PVC
- Diffuser: PVC
- Long life: 20 000h
- Ambient temperature: -10+40°
- Protection against dust and moisture: IP21
- With test button

Features:

- Clearly indicates directions to emergency exits in panic situations
- Automatic switch-on in case of power failure
- Low power consumption

Area of application:

- Public buildings
- Commercial buildings
- Administrative buildings
- Residential buildings
- Banks
- Hospitals
- Schools

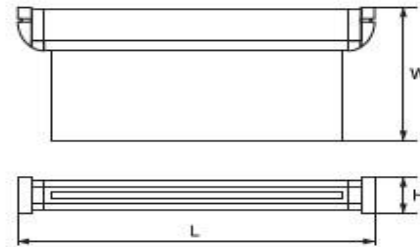
TECHNICAL SPECIFICATION

INDOOR-EMERGENCY LIGHTS

ELMARK[®]

The Brand of Electricity

Variants and Dimensions:



Model	LED type	Discharge time	Size (mm)			Catalogue number
			(h)	Length	Height	
XL5113- DOWN ARROW	7 super bright SMD LED	3	220	22	260	9XL5113
XL3114- SIDE ARROW	7 super bright SMD LED	3	220	22	260	9XL3114
XL3115- EXIT	7 super bright SMD LED	3	220	22	260	9XL3115
XL5114- UP ARROW	7 super bright SMD LED	3	220	22	260	9XL5113

Barcodes:

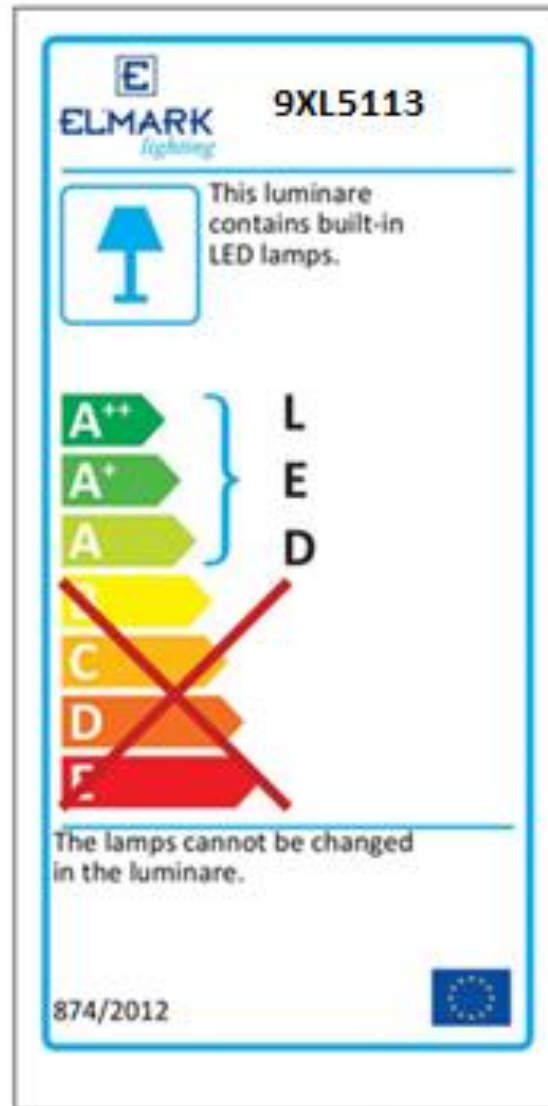
9XL5113	3800131207548
9XL5114	3800131214706
9XL3114	3800131207531
9XL3115	3800131207524

TECHNICAL SPECIFICATION

INDOOR-EMERGENCY LIGHTS

ELMARK

The Brand of Electricity



EN 55015 • EN 61000-3-2 • EN 61000-3-3 • EN 61547 • EN 60598-1 • EN 60598-2-22 • EN 61347-1 •

EN 61347-2-13 • EN 13032-4 • EN 50581:2012

